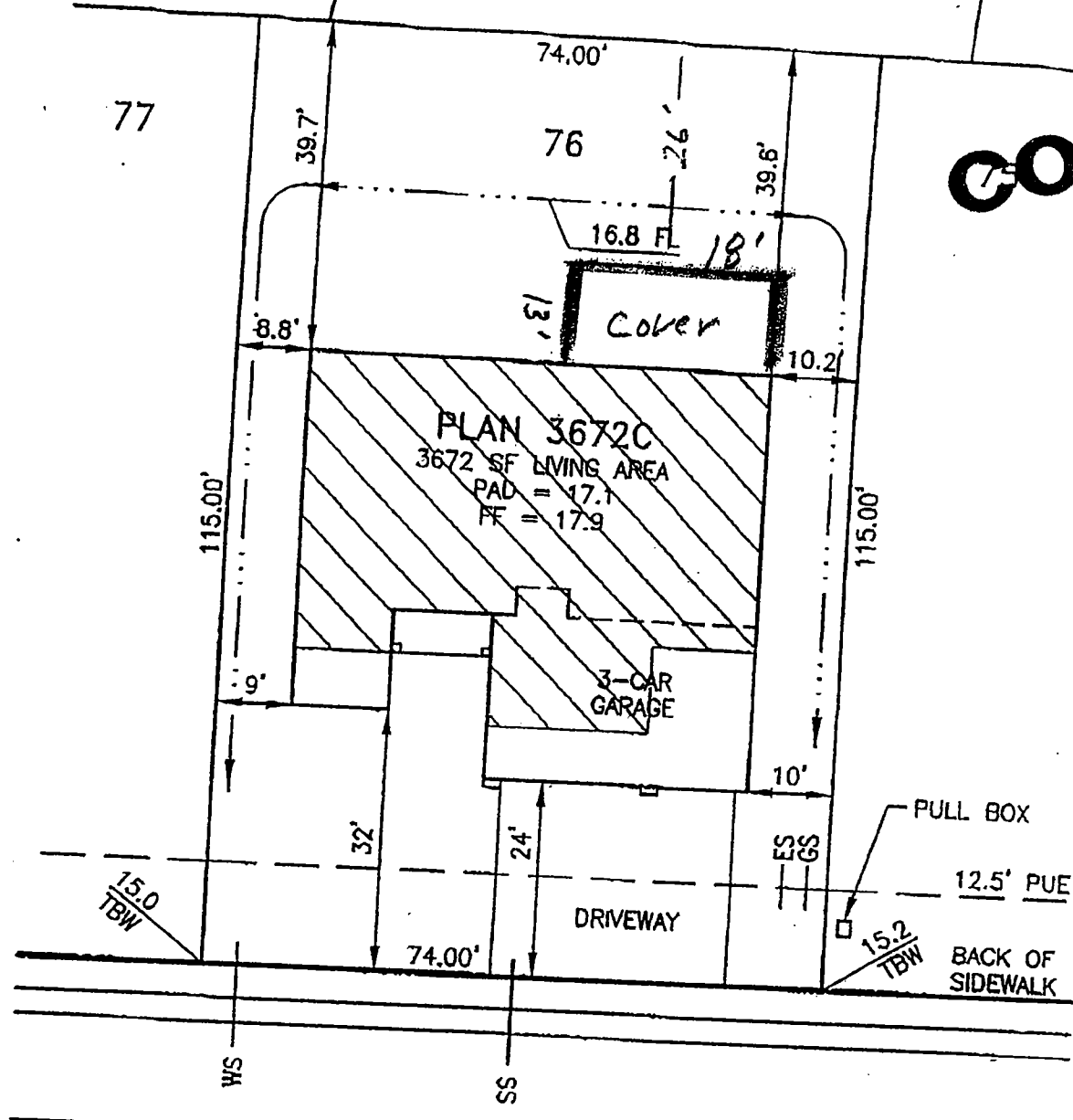
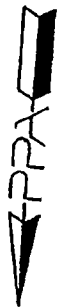


COPY



PROFESSIONAL RELATIONSHIP FROM BUILDING FOUNDATION TO PROPERTY LINES, DRAINAGE CONTROL ELEVATIONS AND DIRECTION OF DRAINAGE FLOW. THIS IS DONE TO CONFORM TO LOCAL ORDINANCES F
 NOT SHOWN ON THIS PLAN IS APPROXIMATE, EXCEPT FOR MINIMUM SETBACKS WHICH ARE REQUIRED BY LOCAL ORDINANCE. THIS PLAN DOES NOT REFLECT AS BUILT CONDITIONS WHICH WILL LIKELY VARY.

X WL
X PL

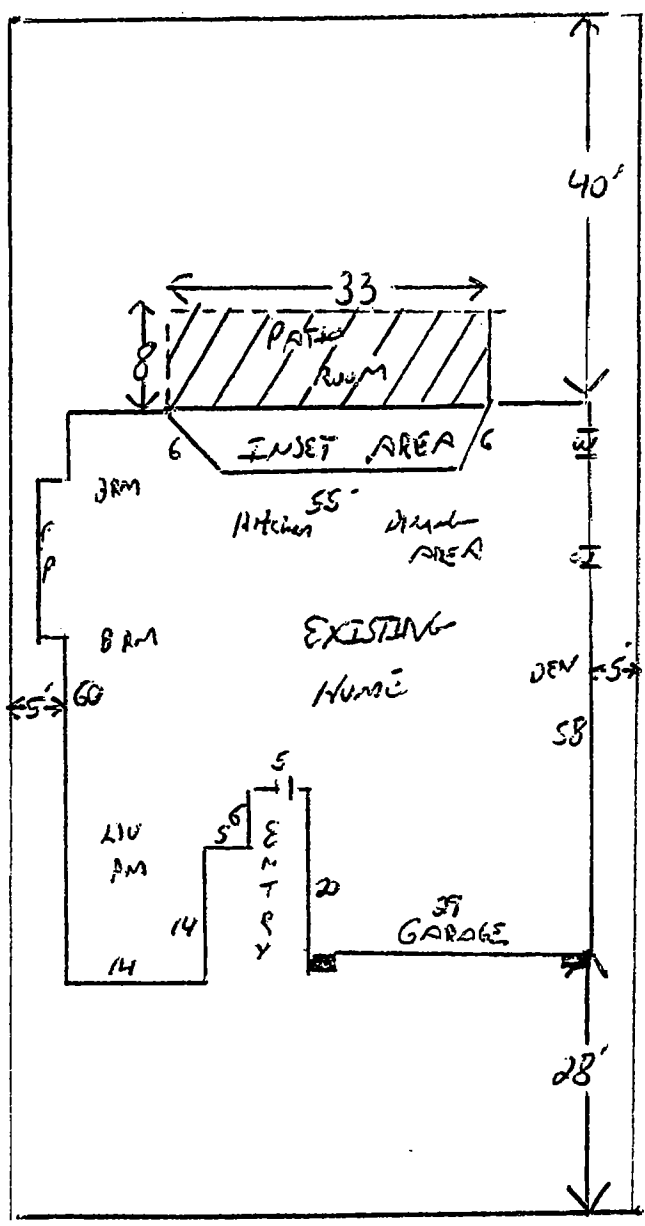
Approved By: <i>[Signature]</i>	Morrison Homes Rep. <i>5/8/03</i>	Date
Revision	Approved By	Date
▲		
▲		

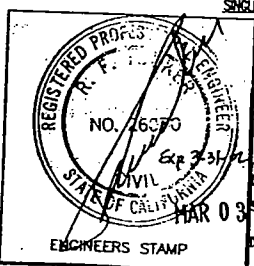
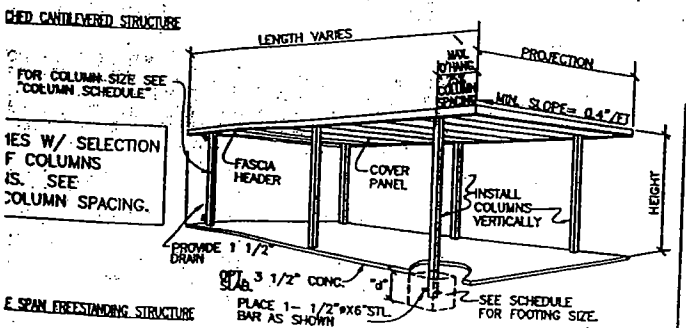
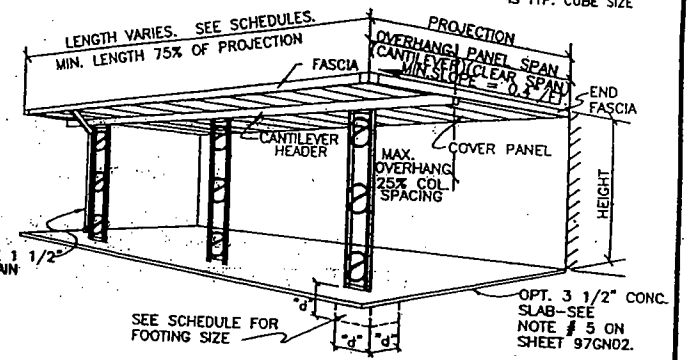
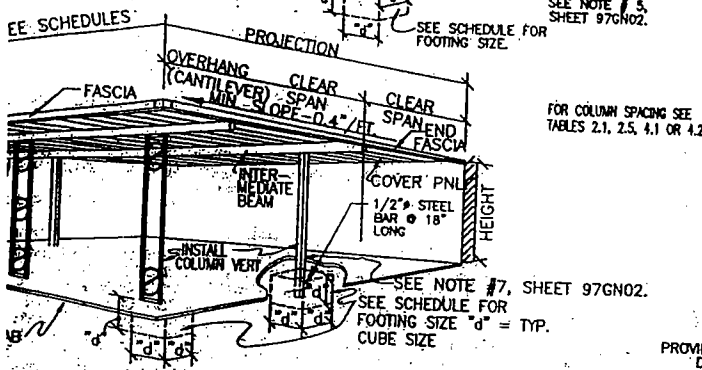
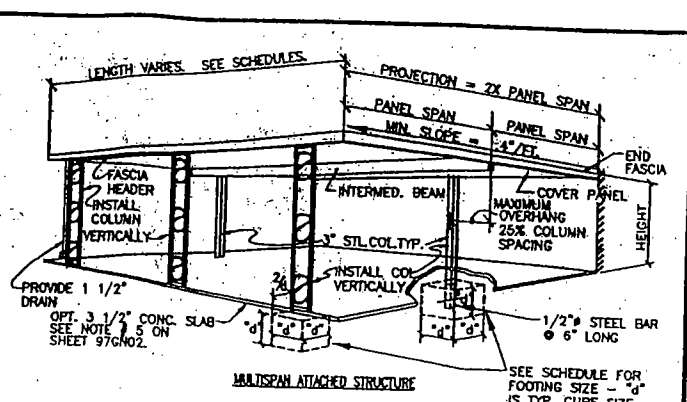
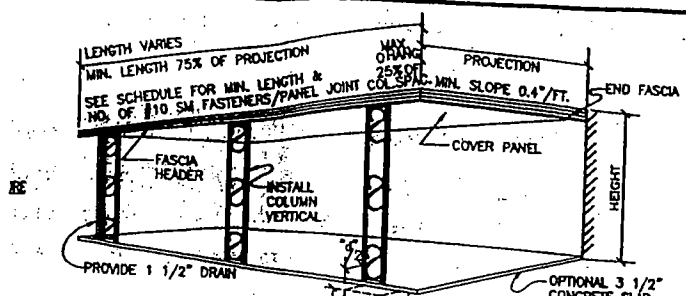
LOT AREA: 8510 SF
 ALLOWED LOT COVERAGE: N/A
 ACTUAL LOT COVERAGE: 2492 SF = 29.3%
 REAR YARD AREA: 2935 SF
 NUMBER OF BEDROOMS:

It is understood that the drainage areas, slopes and grades shall not be altered, changed, blocked, modified or in any way be reconstructed by Owner contrary to what is depicted on this Plot Plan. THESE CONDITIONS RUN WITH THE LAND AND ARE BINDING ON ALL SUBSEQUENT OWNERS. All setback dimensions and elevations as shown may be adjusted to fit field conditions.

Plot Plan for the Lakeside Community
Lakeside Unit No 20
 Morrison Homes Tract #
 PPA Job #001010
Lot 76
 APN
Morrison Homes - Sacramento Division

COPY





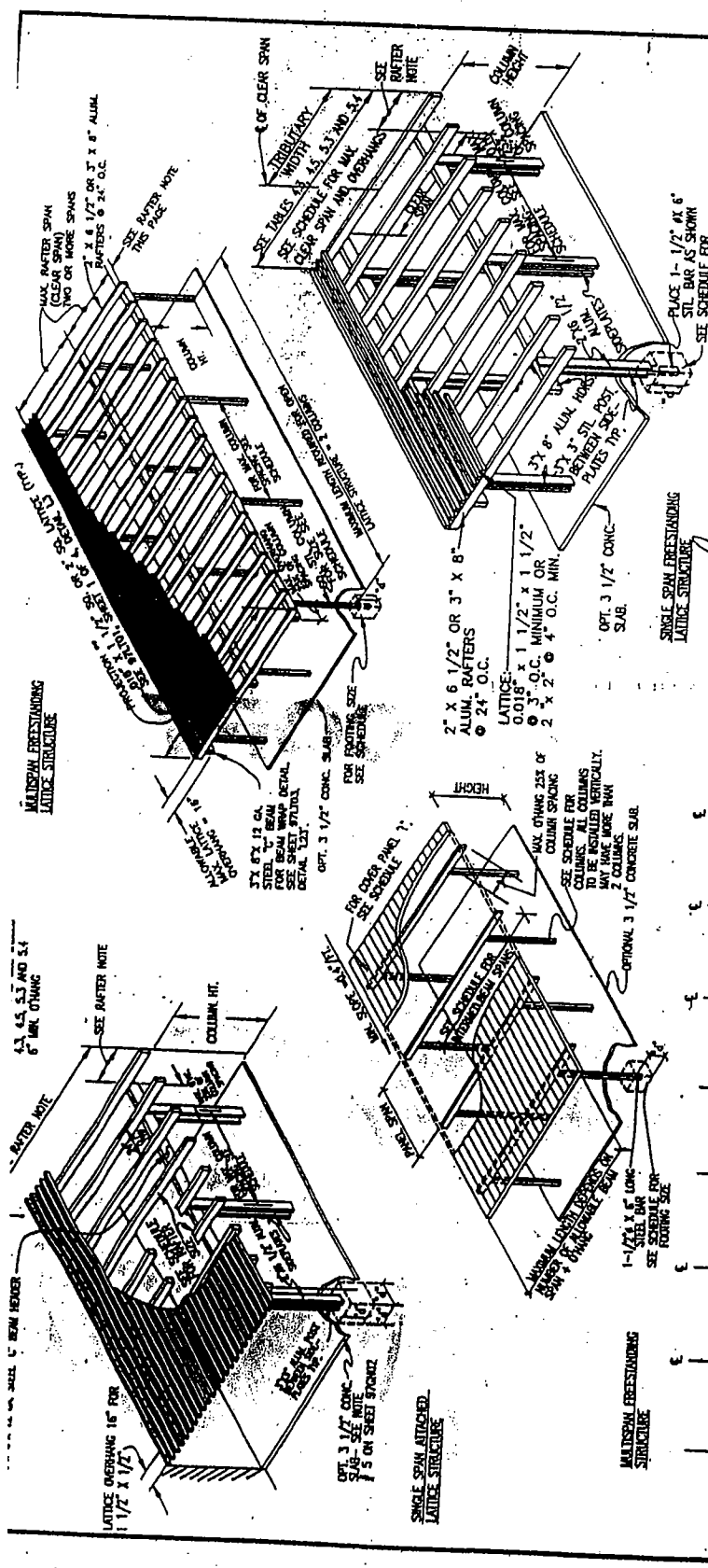
DATE	REVISION	DATE	REVISION

Amerimax
 BUILDING PRODUCTS, INC.
 Engineering Services
 1140 All Pro Drive
 Elkhart, IN 46514

PROJECT NO. KG
 DRAWING OR PART NAME: NONE
 STRUCTURAL CONFIGURATIONS
 DATE: 2/8/2000
 DRAWING OR PART NUMBER: 97SC01
 SHEET 1 OF 2

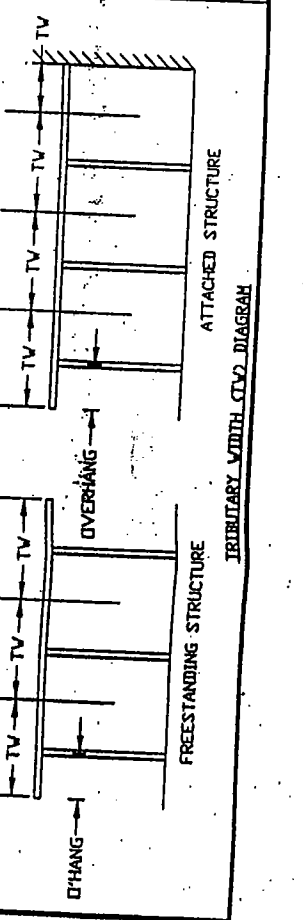
COPY

Sample Only



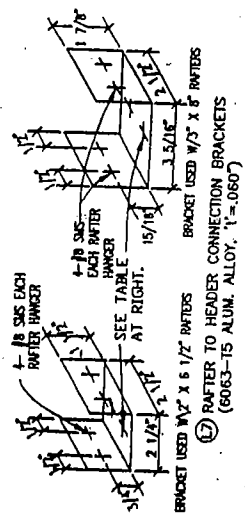
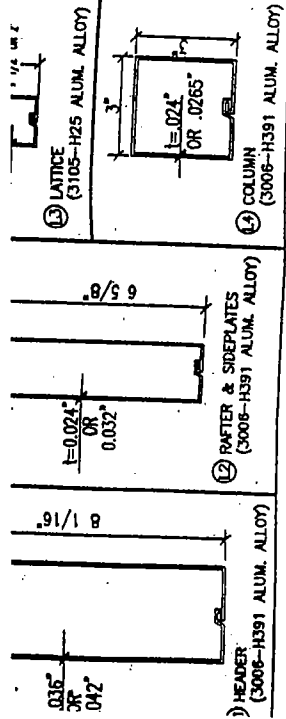
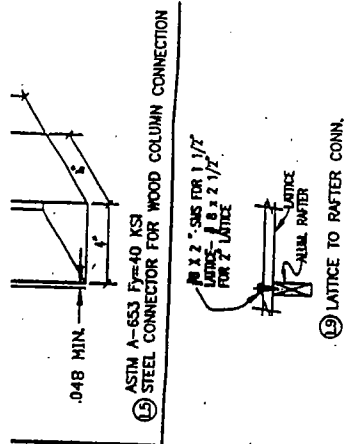
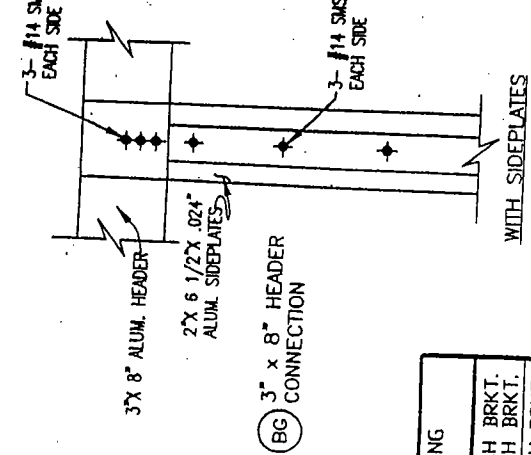
DATE	REVISION	DATE	REVISION
1/3/2000			

Amcimax ENGINEERING SERVICES 1140 AIR PRO DRIVE ENHART, IN 46314	ENGINEERING SERVICES 1140 AIR PRO DRIVE ENHART, IN 46314
DRAWING NO. E-2621P SCALE: NONE DATE: 2/8/2000	PROJECT NO. 97SC02 SHEET 2 OF 2

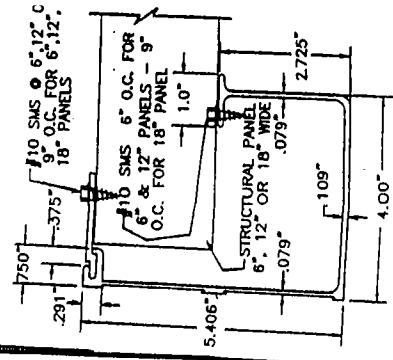
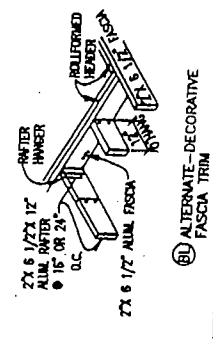
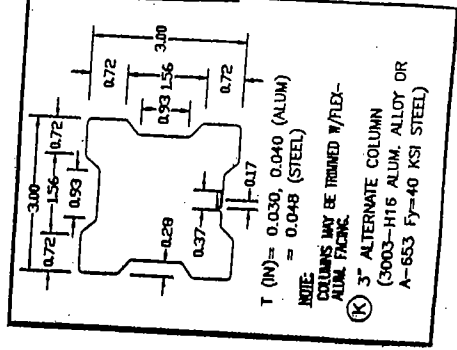
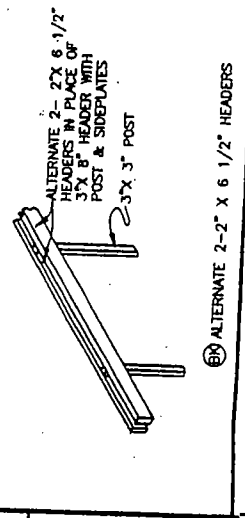


COPY

Sample Only



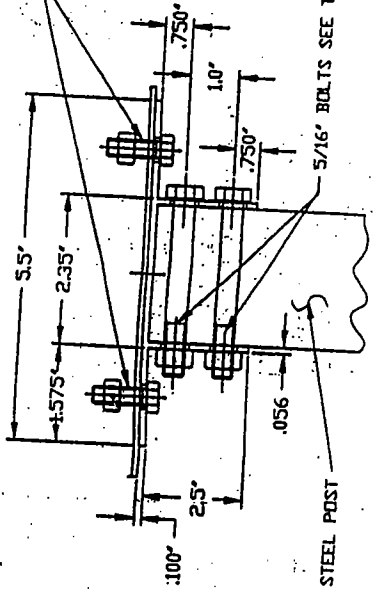
HEADER GAGE	HEADER	DETAIL	MAXIMUM WIND LOAD	MAX TRIB	FASTENING
.042	3' x 8'	L1	90 MPH PATIO	6'	2-#8 SMS EACH BRKT. 3-#8 SMS EACH BRKT.
.036	3' x 8'	L1	90 MPH PATIO	10'	2-#8 SMS EACH BRKT. 3-#8 SMS EACH BRKT.
.032	3' x 8'	L11	90 MPH PATIO	10'	2-#8 SMS EACH BRKT. 3-#8 SMS EACH BRKT.
.094	DBL 2 x 6 8' STEEL C	L23	90 MPH PATIO 90 MPH EXP C	10'	2-#14 SMS EACH BRKT. 2-#14 SMS EACH BRKT.



COPY

Sample Only

5/16" BOLTS W/ 1" DIA
 x 3/32" THK STL WASHER
 IN 8" STEEL "C" BEAM
 SEE TABLE B4 COLUMN E4
 FOR QUANTITY



048 x 3' x 3' STEEL POST

5/16" BOLTS SEE TABLE B3 COLUMN "H" FOR QUANTITY

(A) ALTERNATE 3" SQ. COLUMN CONNECTOR BRACKET
 (6063-T6 ALUM. ALLOY)



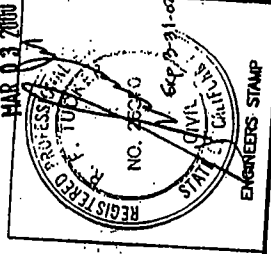
3" X 8" BOX BEAM WRAP

3" X 8" X 12 GA "C" BEAM

(L23) 3" X 12" X 12 GA. STL "C" BEAM WRAP W/ 3" X 8" ALUM. BOX BEAM

DETAIL 3" X 8" - 1 FOR ATTACHED STRUCTURES
 COLUMN TO WRAPPED 3" X 8" X 12 GA
 "C" BEAM HEADER CONNECTIONS

MAR 03 2000



DATE	REVISION	DATE	REVISION

ALUMINUMX Engineering Services
 1140 W. 10th St. Drive
 Elkhart, IN 46514
 PHONE NO. 765-535-1100
 FAX NO. 765-535-1101
 E-MAIL: ALUMINUMX@AOL.COM
 WWW: WWW.ALUMINUMX.COM
 ICBQ ES EVALUATION REPORT NO. ER-2021P
 DRAWING COMPONENT PARTS & CONNECTION DETAILS
 NOT FOR CONSTRUCTION OF COMMERCIAL LATTICE STRUCTURES
 DATE: 2/9/2000
 DRAWING NUMBER: 97LJ03
 SHEET: 3 OF 4

COPY

Sample Only

1 Spacing between bolts and screws shall be 2.5 times the shaft diameter
 2 The edge distance of bolts and screws shall be 3 times the shaft diameter
 3 Connections shall be arranged so that the center of resistance of the connection shall coincide with the resultant line of action of the load.

Table 6.5 Required Number of Fasteners for Tension Loads

Design Uplift (lbs)	Aluminum (lb)		Steel (lb)		Fastener	Design Uplift (lbs)
	#14	#16	#14	#16		
75	1	1	1	1	SMS	75
119	2	2	2	2	SMS	119
147	3	3	3	3	SMS	147
178	4	4	4	4	SMS	178
214	5	5	5	5	SMS	214
254	6	6	6	6	SMS	254
298	7	7	7	7	SMS	298
346	8	8	8	8	SMS	346
403	9	9	9	9	SMS	403
463	10	10	10	10	SMS	463
529	11	11	11	11	SMS	529
602	12	12	12	12	SMS	602
680	13	13	13	13	SMS	680
765	14	14	14	14	SMS	765
856	15	15	15	15	SMS	856
952	16	16	16	16	SMS	952
1051	17	17	17	17	SMS	1051
1175	18	18	18	18	SMS	1175
1296	19	19	19	19	SMS	1296
1426	20	20	20	20	SMS	1426
1564	21	21	21	21	SMS	1564
1710	22	22	22	22	SMS	1710
1868	23	23	23	23	SMS	1868
2030	24	24	24	24	SMS	2030
2204	25	25	25	25	SMS	2204
2391	26	26	26	26	SMS	2391
2588	27	27	27	27	SMS	2588
2796	28	28	28	28	SMS	2796
2988	29	29	29	29	SMS	2988
3175	30	30	30	30	SMS	3175
3368	31	31	31	31	SMS	3368
3566	32	32	32	32	SMS	3566
3769	33	33	33	33	SMS	3769
3968	34	34	34	34	SMS	3968
4172	35	35	35	35	SMS	4172
4381	36	36	36	36	SMS	4381
4596	37	37	37	37	SMS	4596
4816	38	38	38	38	SMS	4816
5041	39	39	39	39	SMS	5041
5271	40	40	40	40	SMS	5271
5506	41	41	41	41	SMS	5506
5746	42	42	42	42	SMS	5746
5991	43	43	43	43	SMS	5991
6241	44	44	44	44	SMS	6241
6496	45	45	45	45	SMS	6496
6756	46	46	46	46	SMS	6756
7021	47	47	47	47	SMS	7021
7291	48	48	48	48	SMS	7291
7566	49	49	49	49	SMS	7566
7846	50	50	50	50	SMS	7846

Table 6.6 Required Number of Fasteners for Tension Loads (continued)

Design Uplift (lbs)	Aluminum (lb)		Steel (lb)		Fastener	Design Uplift (lbs)
	#14	#16	#14	#16		
8121	51	51	51	51	SMS	8121
8396	52	52	52	52	SMS	8396
8676	53	53	53	53	SMS	8676
8961	54	54	54	54	SMS	8961
9251	55	55	55	55	SMS	9251
9546	56	56	56	56	SMS	9546
9846	57	57	57	57	SMS	9846
10151	58	58	58	58	SMS	10151
10461	59	59	59	59	SMS	10461
10776	60	60	60	60	SMS	10776
11096	61	61	61	61	SMS	11096
11421	62	62	62	62	SMS	11421
11751	63	63	63	63	SMS	11751
12086	64	64	64	64	SMS	12086
12426	65	65	65	65	SMS	12426
12771	66	66	66	66	SMS	12771
13121	67	67	67	67	SMS	13121
13476	68	68	68	68	SMS	13476
13836	69	69	69	69	SMS	13836
14201	70	70	70	70	SMS	14201
14571	71	71	71	71	SMS	14571
14946	72	72	72	72	SMS	14946
15326	73	73	73	73	SMS	15326
15711	74	74	74	74	SMS	15711
16101	75	75	75	75	SMS	16101
16496	76	76	76	76	SMS	16496
16896	77	77	77	77	SMS	16896
17301	78	78	78	78	SMS	17301
17711	79	79	79	79	SMS	17711
18126	80	80	80	80	SMS	18126
18546	81	81	81	81	SMS	18546
18971	82	82	82	82	SMS	18971
19401	83	83	83	83	SMS	19401
19836	84	84	84	84	SMS	19836
20276	85	85	85	85	SMS	20276
20721	86	86	86	86	SMS	20721
21171	87	87	87	87	SMS	21171
21626	88	88	88	88	SMS	21626
22086	89	89	89	89	SMS	22086
22551	90	90	90	90	SMS	22551
23021	91	91	91	91	SMS	23021
23496	92	92	92	92	SMS	23496
23976	93	93	93	93	SMS	23976
24461	94	94	94	94	SMS	24461
24951	95	95	95	95	SMS	24951
25446	96	96	96	96	SMS	25446
25946	97	97	97	97	SMS	25946
26451	98	98	98	98	SMS	26451
26961	99	99	99	99	SMS	26961
27476	100	100	100	100	SMS	27476

Table 6.7 Required Number of Fasteners for Tension Loads (continued)

Design Uplift (lbs)	Aluminum (lb)		Steel (lb)		Fastener	Design Uplift (lbs)
	#14	#16	#14	#16		
27991	101	101	101	101	SMS	27991
28521	102	102	102	102	SMS	28521
29056	103	103	103	103	SMS	29056
29596	104	104	104	104	SMS	29596
30141	105	105	105	105	SMS	30141
30691	106	106	106	106	SMS	30691
31246	107	107	107	107	SMS	31246
31806	108	108	108	108	SMS	31806
32371	109	109	109	109	SMS	32371
32941	110	110	110	110	SMS	32941
33516	111	111	111	111	SMS	33516
34096	112	112	112	112	SMS	34096
34681	113	113	113	113	SMS	34681
35271	114	114	114	114	SMS	35271
35866	115	115	115	115	SMS	35866
36466	116	116	116	116	SMS	36466
37071	117	117	117	117	SMS	37071
37681	118	118	118	118	SMS	37681
38296	119	119	119	119	SMS	38296
38916	120	120	120	120	SMS	38916
39541	121	121	121	121	SMS	39541
40171	122	122	122	122	SMS	40171
40806	123	123	123	123	SMS	40806
41446	124	124	124	124	SMS	41446
42091	125	125	125	125	SMS	42091
42741	126	126	126	126	SMS	42741
43396	127	127	127	127	SMS	43396
44056	128	128	128	128	SMS	44056
44721	129	129	129	129	SMS	44721
45391	130	130	130	130	SMS	45391
46066	131	131	131	131	SMS	46066
46746	132	132	132	132	SMS	46746
47431	133	133	133	133	SMS	47431
48121	134	134	134	134	SMS	48121
48816	135	135	135	135	SMS	48816
49516	136	136	136	136	SMS	49516
50221	137	137	137	137	SMS	50221
50931	138	138	138	138	SMS	50931
51646	139	139	139	139	SMS	51646
52366	140	140	140	140	SMS	52366

Table 6.8 Required Number of Fasteners for Tension Loads (continued)

Design Uplift (lbs)	Aluminum (lb)		Steel (lb)		Fastener	Design Uplift (lbs)
	#14	#16	#14	#16		
53091	141	141	141	141	SMS	53091
53821	142	142	142	142	SMS	53821
54556	143	143	143	143	SMS	54556
55296	144	144	144	144	SMS	55296
56041	145	145	145	145	SMS	56041
56791	146	146	146	146	SMS	56791
57546	147	147	147	147	SMS	57546
58306	148	148	148	148	SMS	58306
59071	149	149	149	149	SMS	59071
59841	150	150	150	150	SMS	59841
60616	151	151	151	151	SMS	60616
61396	152	152	152	152	SMS	61396
62181	153	153	153	153	SMS	62181
62971	154	154	154	154	SMS	62971
63766	155	155	155	155	SMS	63766
64566	156	156	156	156	SMS	64566
65371	157	157	157	157	SMS	65371
66181	158	158	158	158	SMS	66181
66996	159	159	159	159	SMS	66996
67816	160	160	160	160	SMS	67816
68641	161	161	161	161	SMS	68641
69471	162	162	162	162	SMS	69471
70306	163	163	163	163	SMS	70306
71146	164	164	164	164	SMS	71146
71991	165	165	165	165	SMS	71991
72841	166	166	166	166	SMS	72841
73696	167	167	167	167	SMS	73696
74556	168	168	168	168	SMS	74556
75421	169	169	169	169	SMS	75421
76291	170	170	170	170	SMS	76291
77166	171	171	171	171	SMS	77166
78046	172	172	172	172	SMS	78046
78931	173	173	173	173	SMS	78931
79821	174	174	174	174	SMS	79821
80716	175	175	175	175	SMS	80716
81616	176	176	176	176	SMS	81616
82521	177	177	177	177	SMS	82521
83431	178	178	178	178	SMS	83431
84346	179	179	179	179	SMS	84346
85266	180	180	180	180	SMS	85266
86191	181	181	181	181	SMS	86191
87121	182	182	182	182	SMS	87121
88056	183	183	183	183	SMS	88056
88996	184	184	184	184	SMS	88996
89941	185	185	185	185	SMS	89941
90891	186	186	186	186	SMS	90891
91846	187	187	187	187	SMS	91846
92806	188	188	188	188	SMS	92806
93771	189	189	189	189	SMS	93771
94741	190	190	190	190	SMS	94741
95716	191	191	191	191	SMS	95716
96696	192	192	192	192	SMS	96696
97681	193	1				